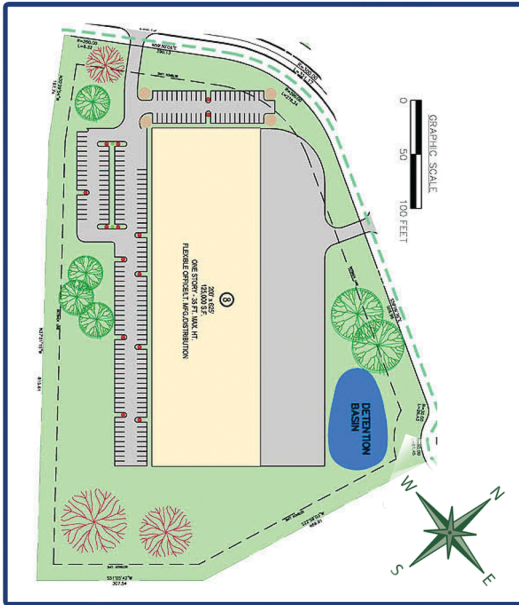


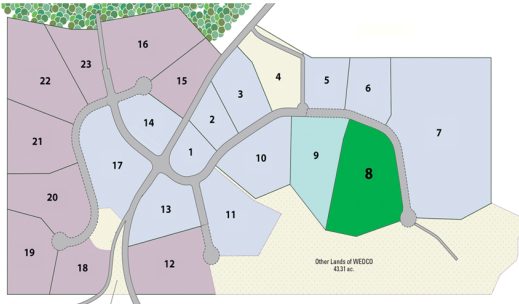
Sterling Business & Technology Park

20 Easton Turnpike, Lake Ariel, PA 18436 • GPS 41.36 -75.39

Lot 8

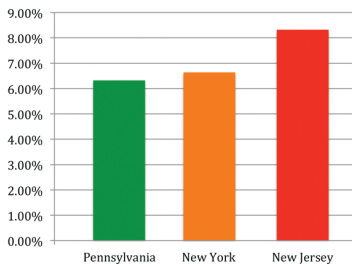


Property Type:	Land
Useable Acres:	12.97
Easement Acres:	N/A
Total Acres:	12.97
Dimensions:	900' x 620'
Adjacent Land Available:	Yes
Access to Rail:	No
Zoning:	Industrial Flex
Building Size:	Up to 124,998 SF
Sewer:	Central Sewer
Water:	Central Water
Electric:	Redundant Substations Three Phase - High Capacity
Nearest International Airport:	30 minutes

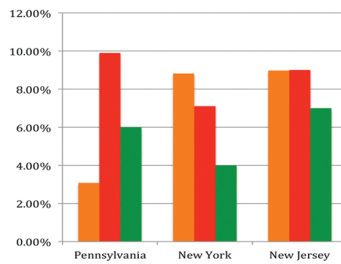


Lot 8 is 12.97 acres. The lot is fairly flat with only a gradual slope toward Innovation Drive. The lot has frontage along Innovation Drive. Lot 8 offers visibility in the business park and is far enough from the main entrance for privacy. Perfect location for assembly, manufacturing, back office, or technology operations. Building heights can go to 45' with township approval. Lots may be combined for larger footprints. The Sterling Business & Technology Park features a water reuse system that recycles 30% of the wastewater for landscaping, sprinklers and other uses. The business park is located between two PPL power substations offering redundant power. Sewer, water, and power is located at the property line. High speed internet bandwidth is available with new high capacity fiber coming soon.

New York City: 110 minutes • Scranton: 20 minutes • Newark: 120 minutes • Philadelphia: 150 minutes

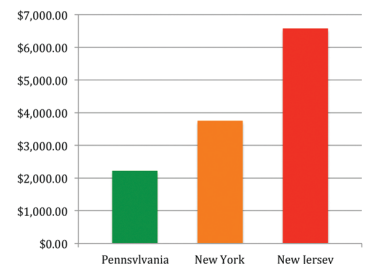


Average of All Tax Rates



Tax Rate Comparison

Individual Income Tax
Corporate Income Tax
Sales Tax



Property Tax Comparison



[linkedin.com/in/sterlingbiztechpark](https://www.linkedin.com/in/sterlingbiztechpark) • twitter.com/SterlingBizTech • facebook.com/SterlingBusinessTechnologyPark

